

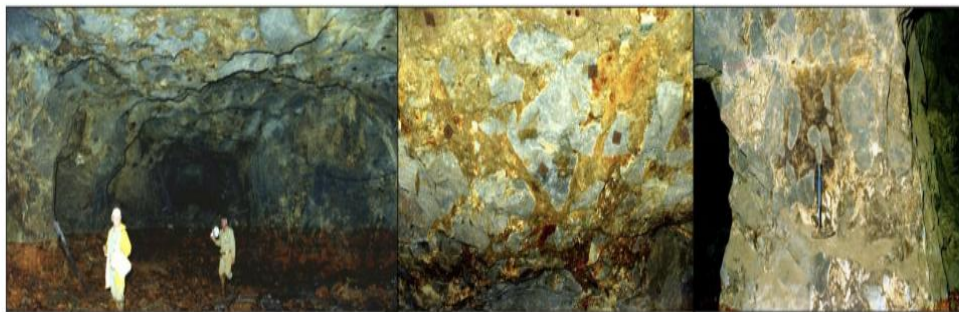
DIME NICKEL PROJECT E31/1272

45km²

Rock Minerals Pty Ltd

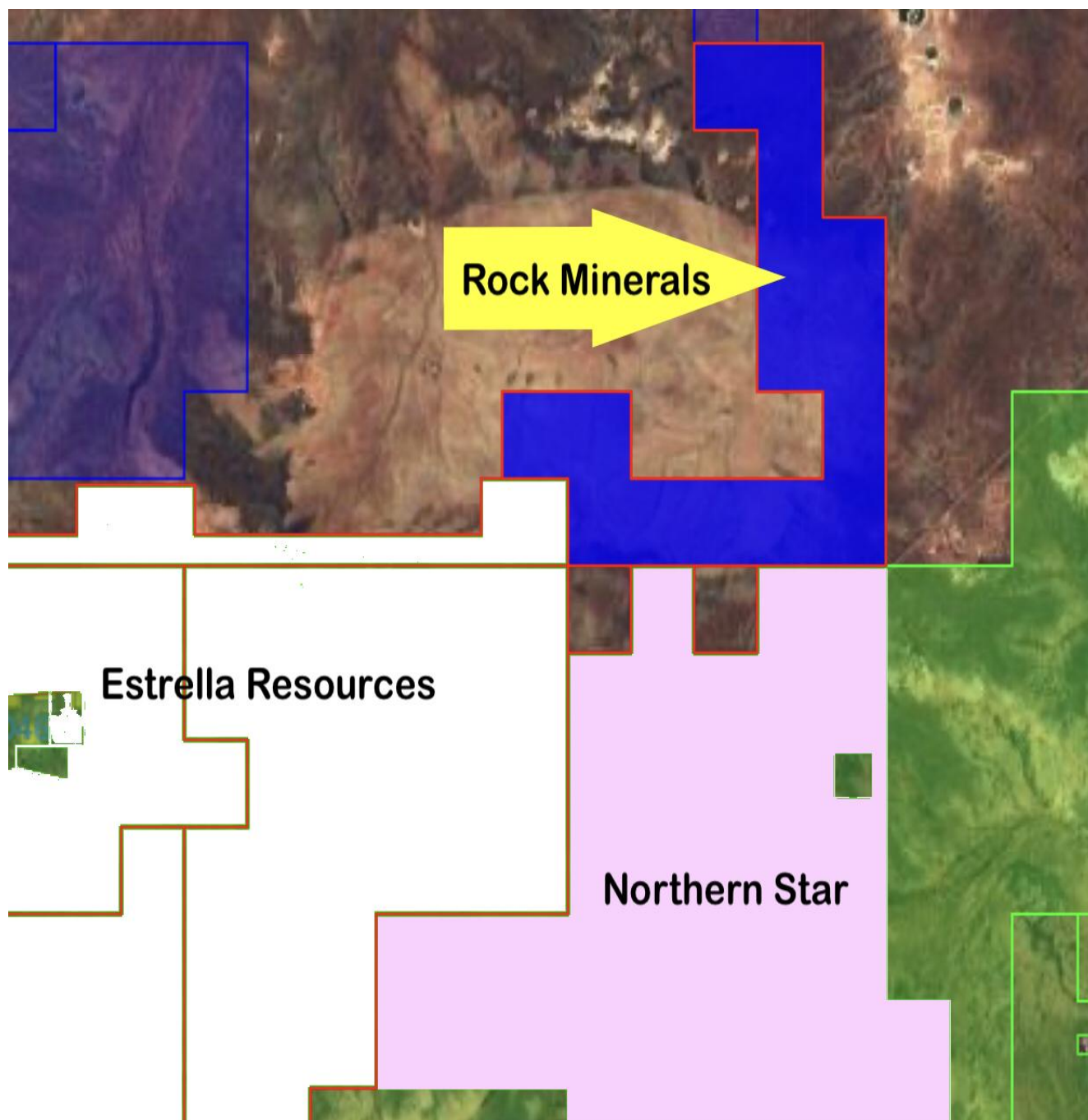
Nickel exploration adjoining ESR's Recent Ni Discovery, historic Carr-Boyd Nickel Mine, Northern Star Resources tenement E31/1159, and 35km north of Poseidon's Black Swan / Silver Swan nickel deposits.

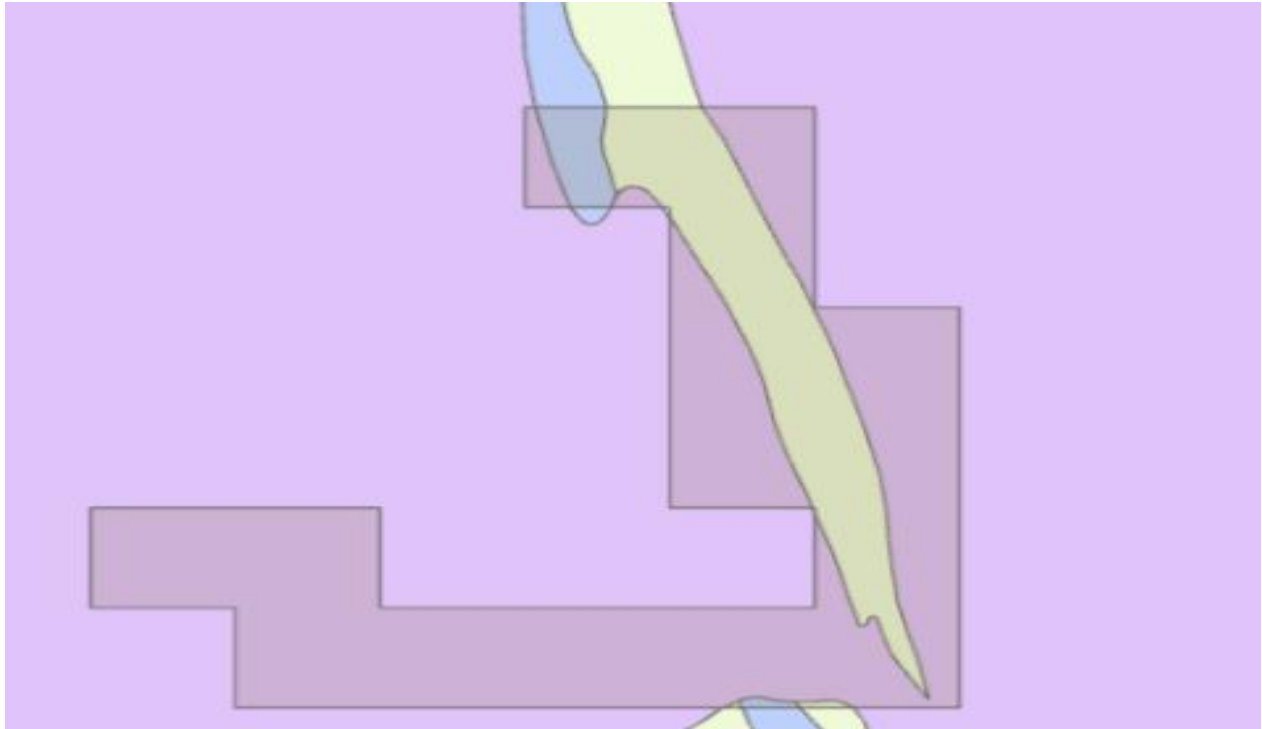
Carr Boyd – Mine Source?



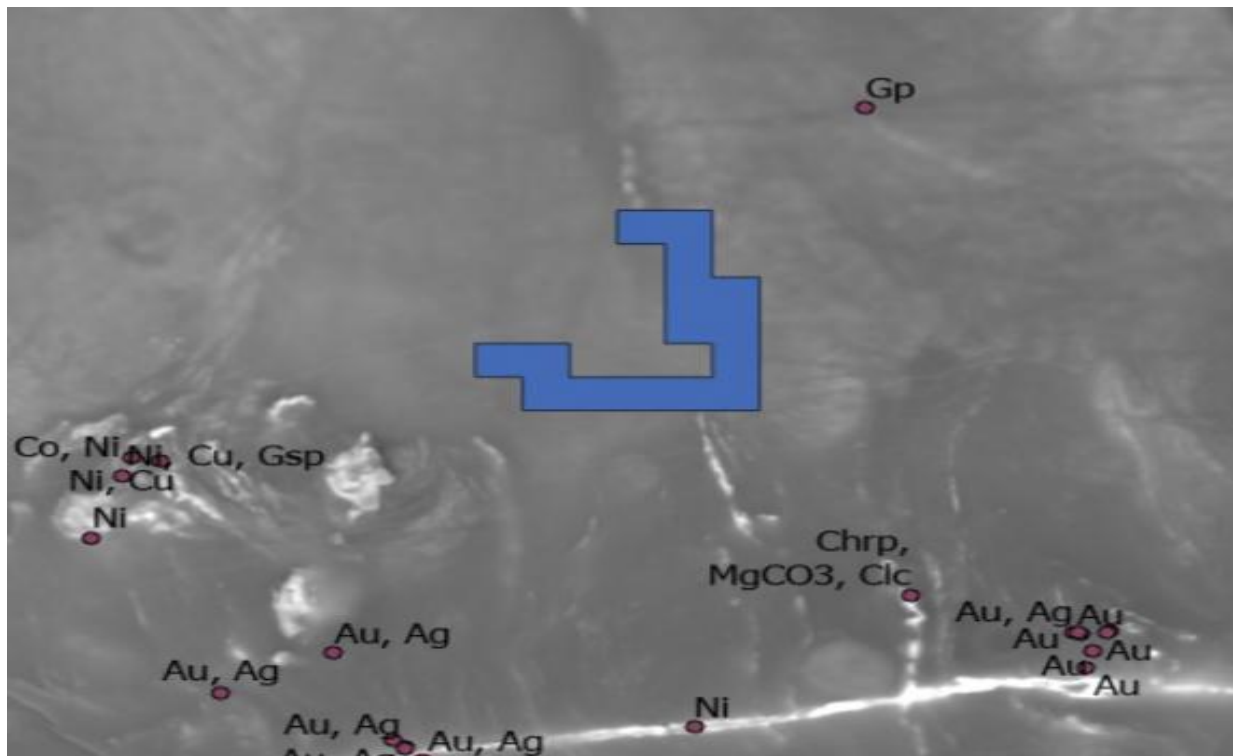
Mined from 1973 to 1977 by WMC

- Total production: 202,100t at 1.43% Ni and 0.46% Cu producing a 9.7% Ni concentrate
- High tenor nickel mineralisation is confined to coarse grained, bronzite pyroxene rich rocks with sulphide minerals forming a matrix around brecciated xenoliths of unmineralised country rocks
- Four ore pipes occur containing a central zone of brecciated and stringer sulphides surrounded by broader zones of strongly disseminated sulphide mineralisation
- Development was completed on 3 levels with partial stoping completed on all levels, including a glory hole through to the surface
- Where did all this high-grade massive nickel sulphide come from?

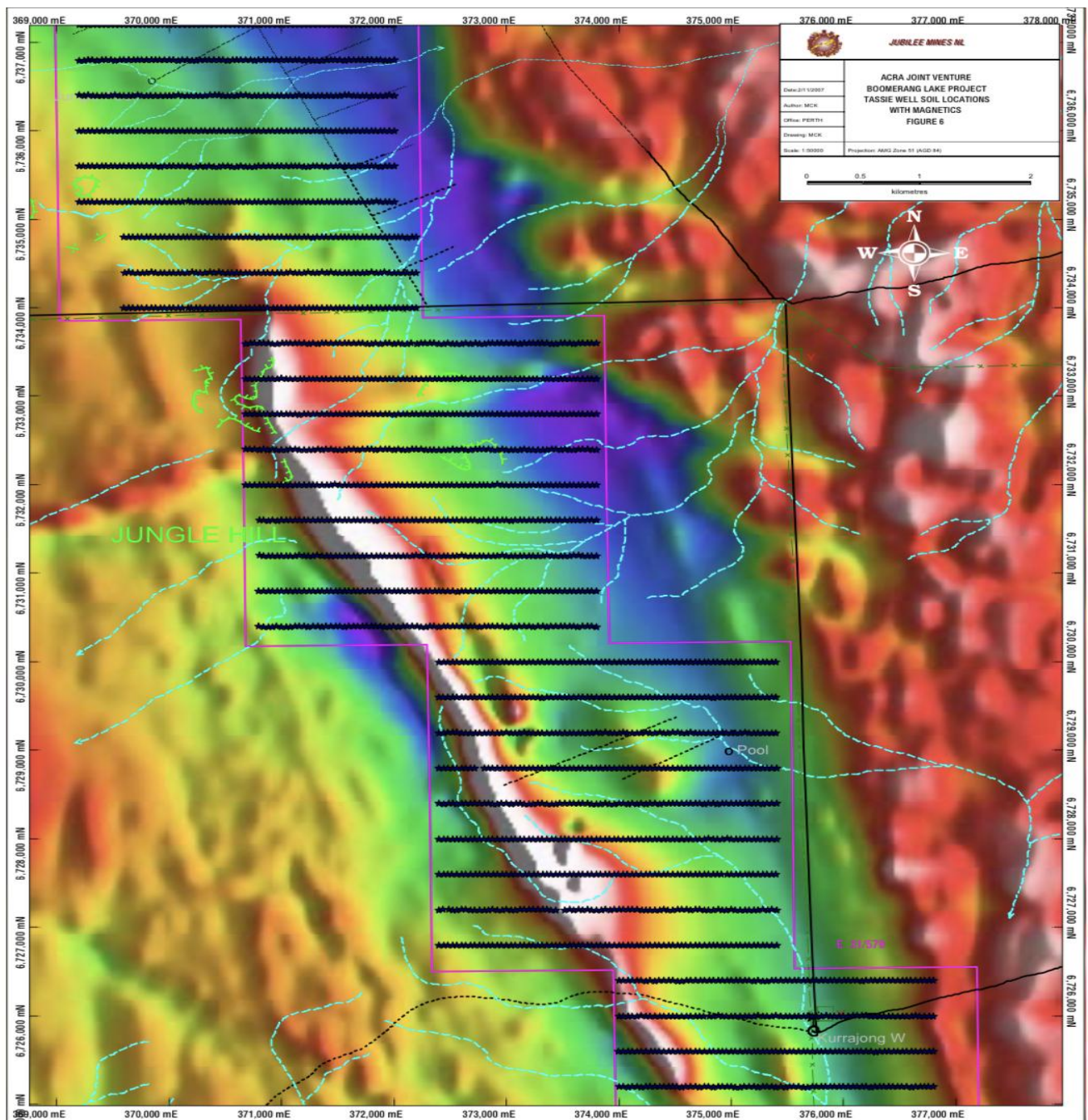




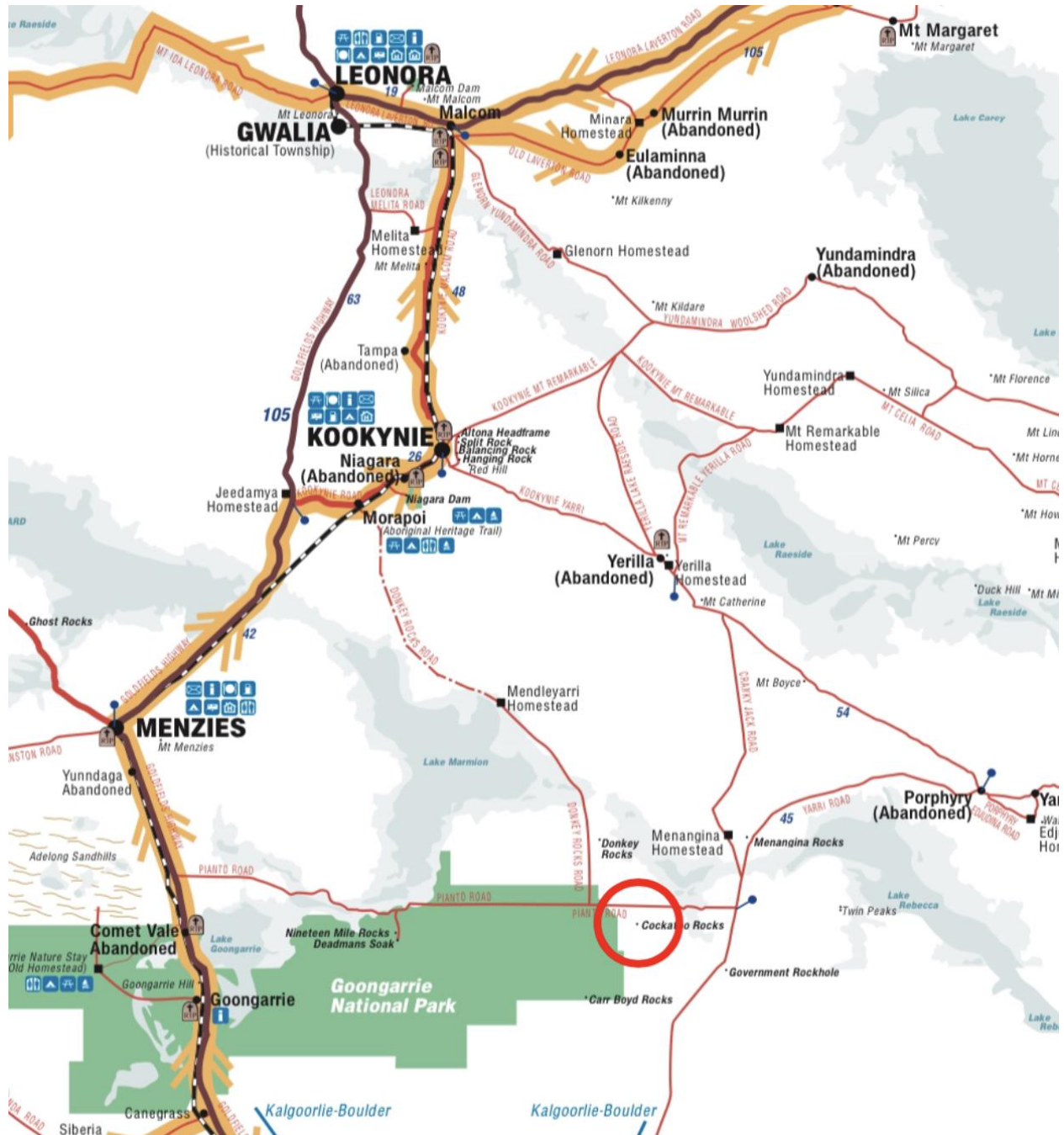
Greenstone running NW-SW through Rock's E31/1272



E31/1272 and nearby mineral prospects



Magnetic feature underlying E31/1272 greenstone



Location in Western Australia