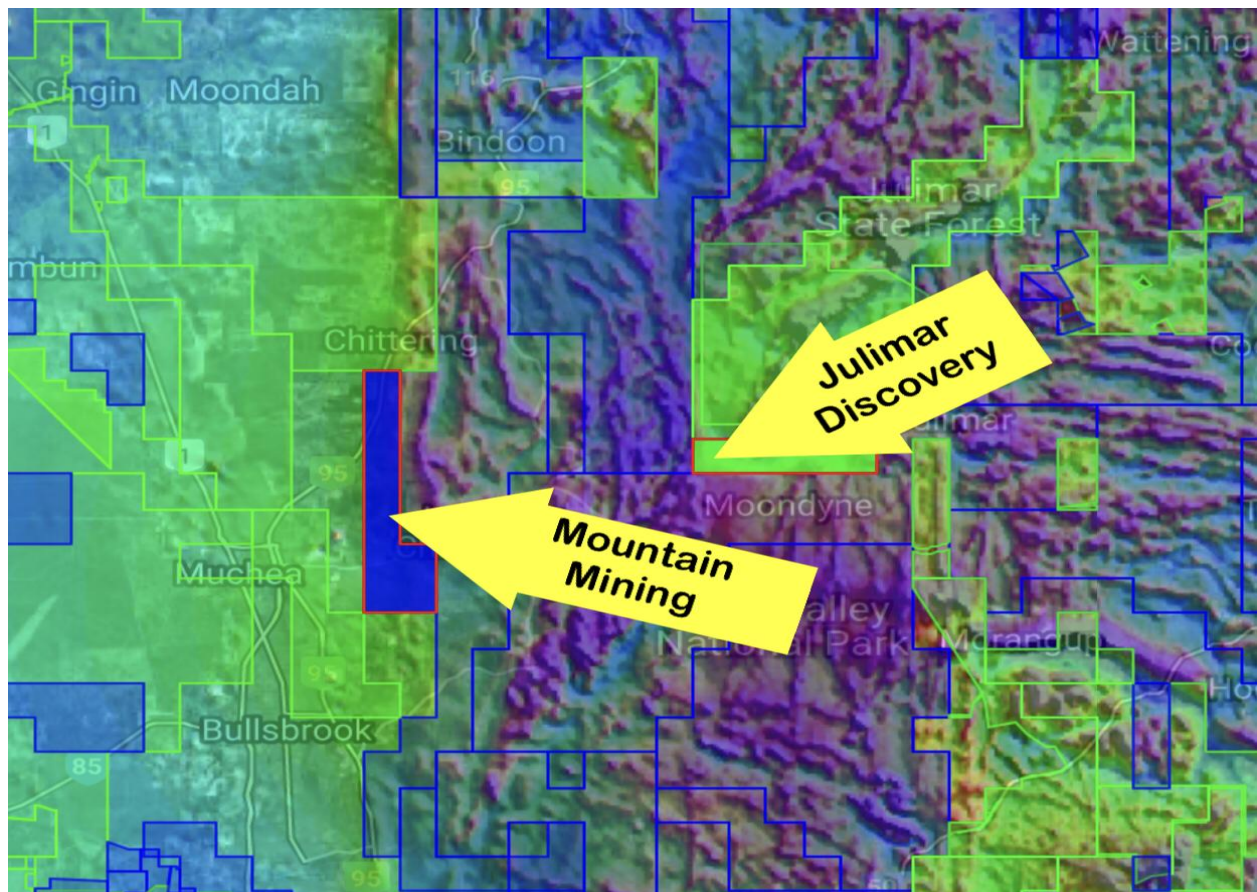


# MOUNTAIN MINING Pty Ltd

Gold and PGE-Ni-Cu Exploration in the Pilbara and Julimar Provinces

## Darling PGE-Ni-Cu Project E70/5607 - 27km<sup>2</sup>

Darling has previously only been explored for bauxite and kaolin. To date there has been no attempt to locate a Julimar style PGE-Ni-Cu deposit, discovered 10km to the east.



Circa 10km from CHN's Julimar Discovery

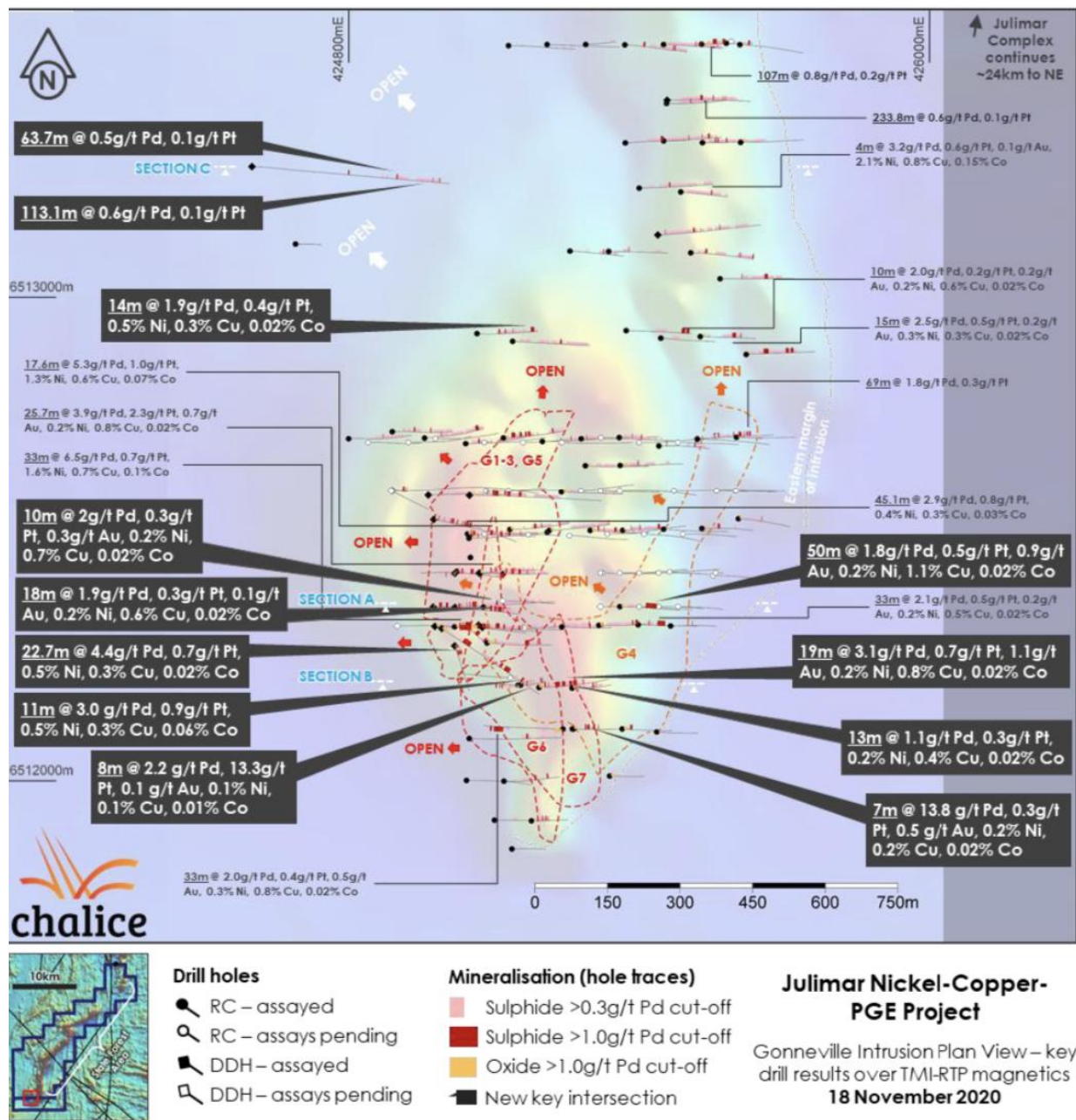
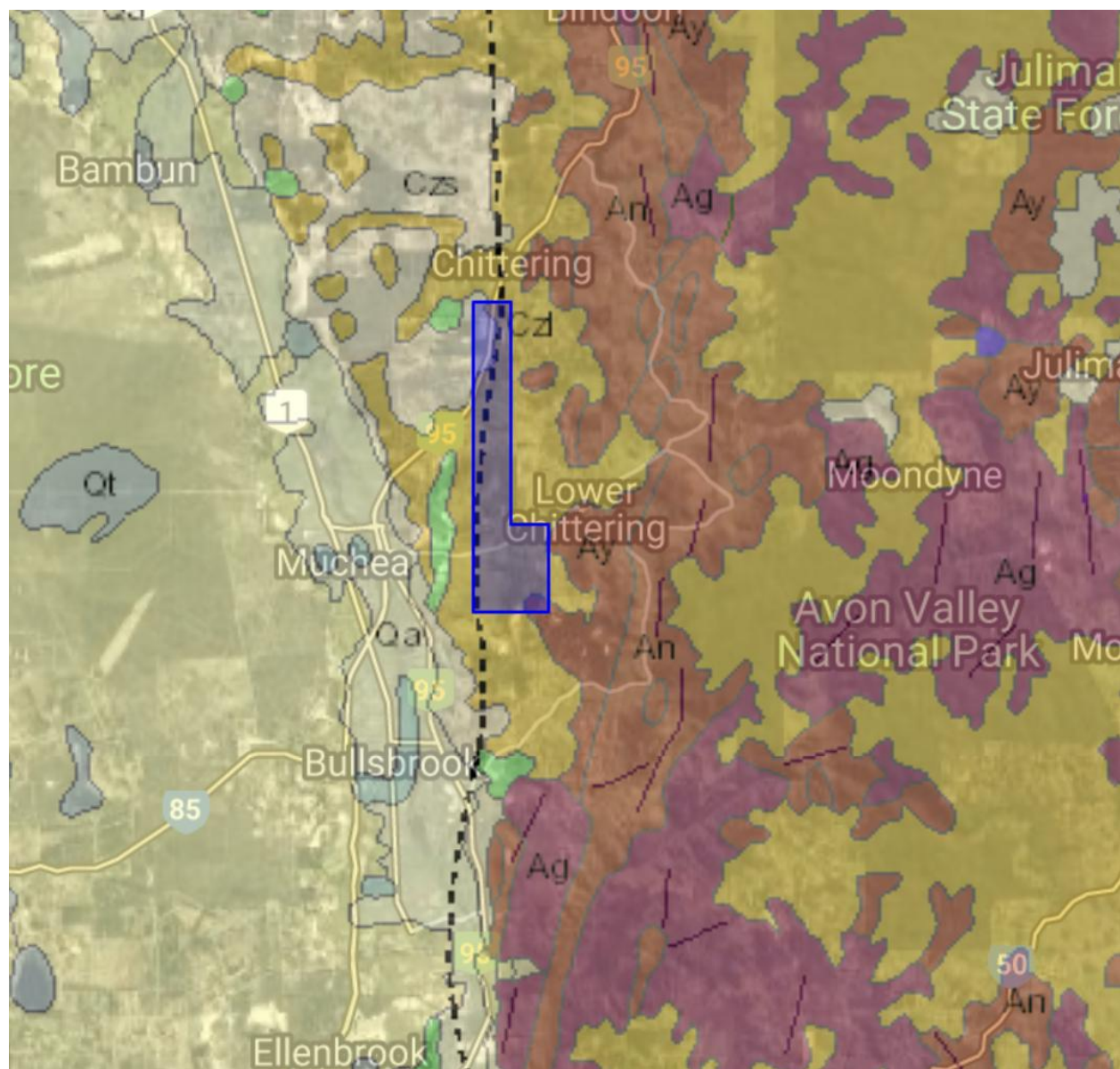


Figure 1. Gonneville Intrusion Plan View – key drill results and G1-G7 Zones over TMI-RTP magnetics.

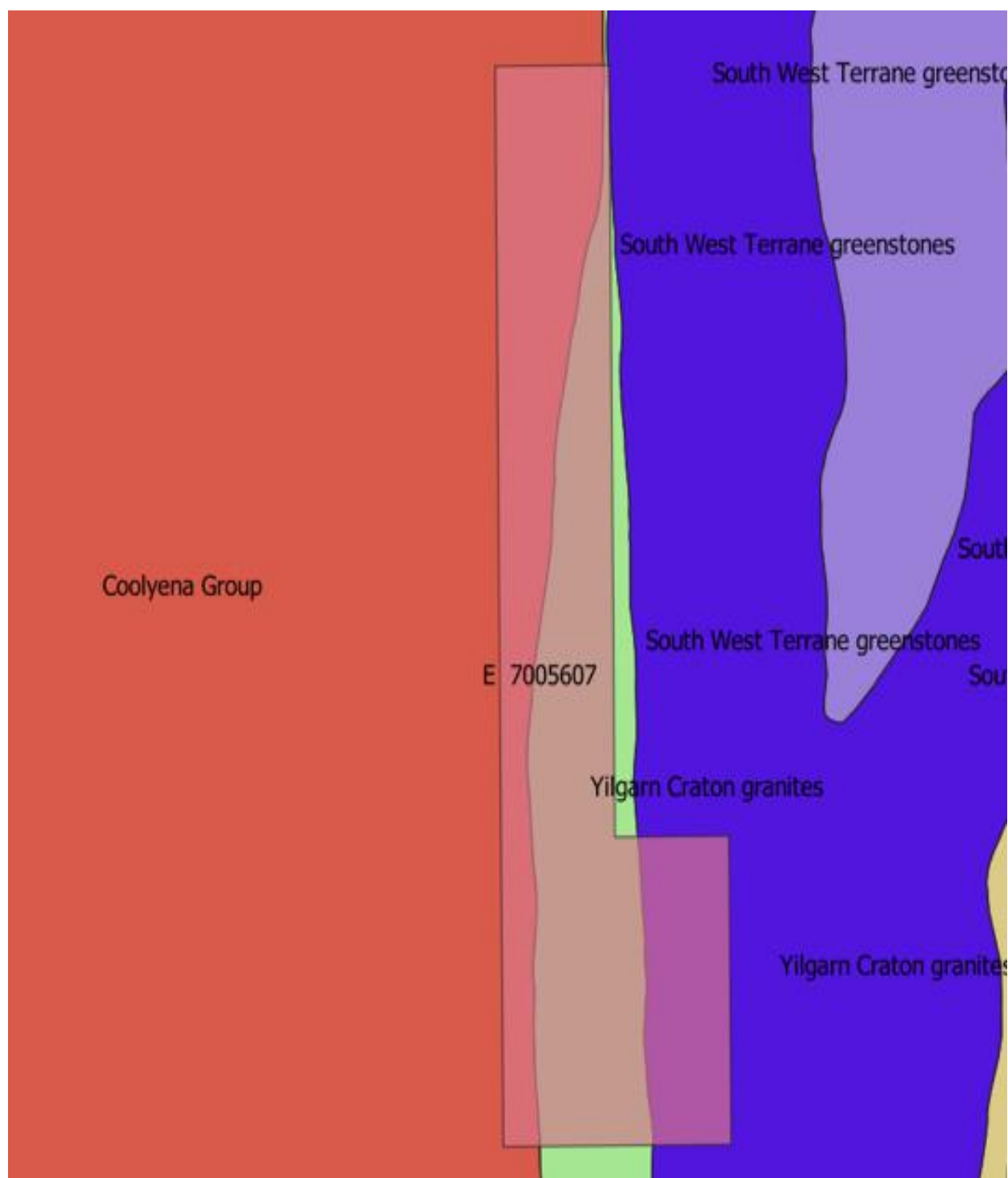
**Julimar drill assays- completely open to the west**





**The regional scale Darling Fault runs through the length of E70/5607**





**Bedrock geology over Darling Fault junction, likely mineralization conduits at depth.**

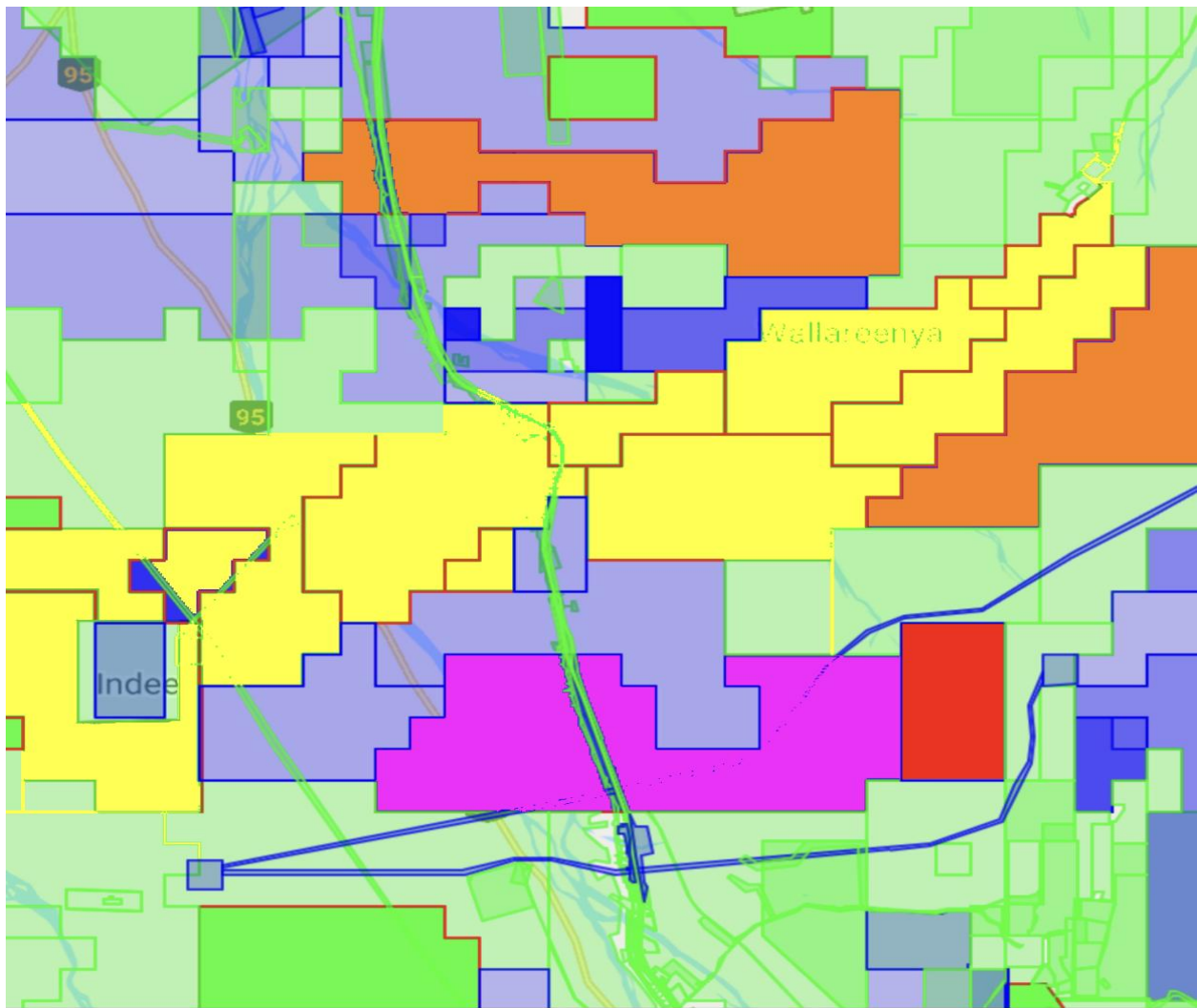


## Indee Gold-Lithium Project

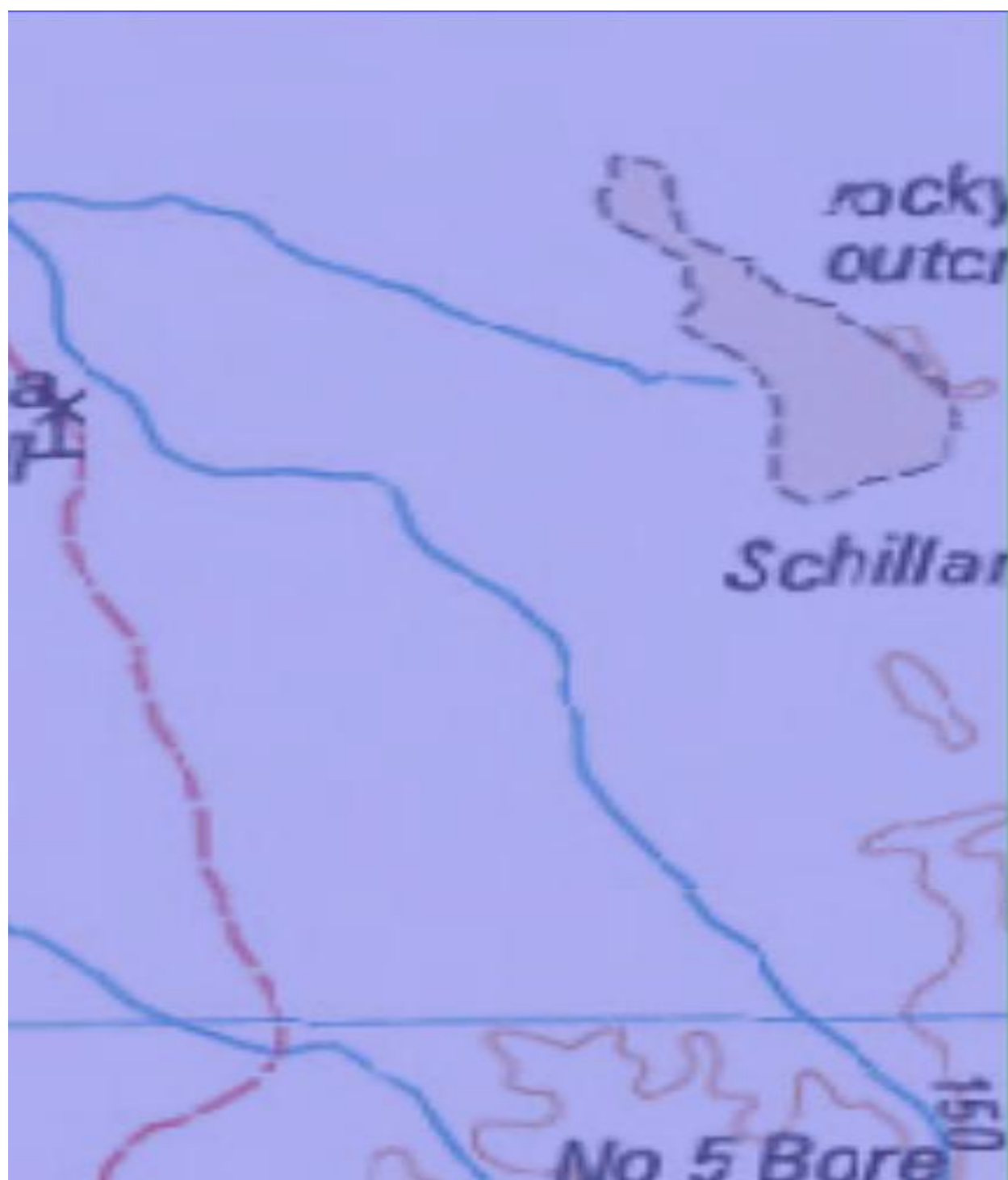
E45/5821 - 45km<sup>2</sup>

Indee Gold has not previously been explored for gold.

Initial desktop review indicates areas of interest, being the geological structure and coincident magnetics running SW-NE through the lower region of the project, and outcropping at the northern end circa 5km from DeGrey (ASX:DEG) tenure.



Indee Gold in red; within 5km of DEG in yellow, and adjoining KAI in pink.

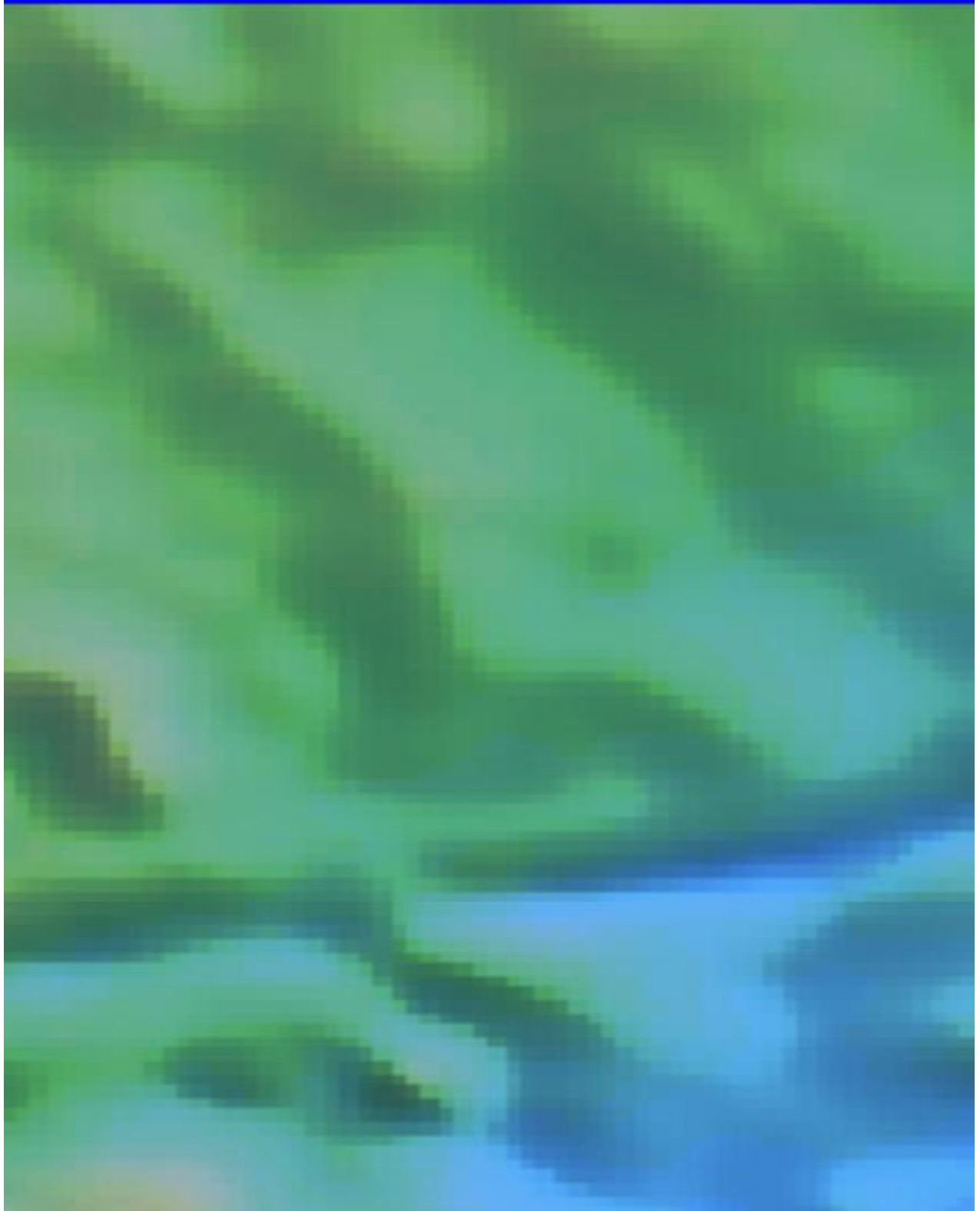


Rocky outcropping at north-east of tenement



**Structure running through lower third of tenement**





**Magnetic feature coincident with geological structure**